

Harlequin Flexity™

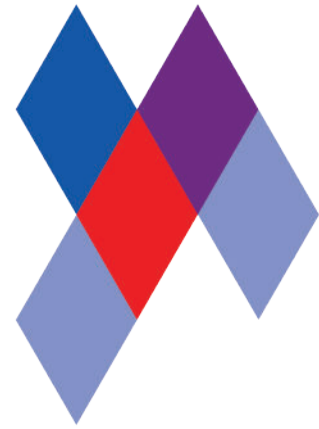
Harlequin Flexity is a self-install sprung floor system featuring stained birch plywood panels and shock-dampening single density elastomer pads.

Performance surface: Harlequin Flexity can be used with a variety of performance surface options from the Harlequin range of performance vinyls and solid or engineered wood finishes. Ramps are available if required.

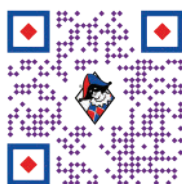
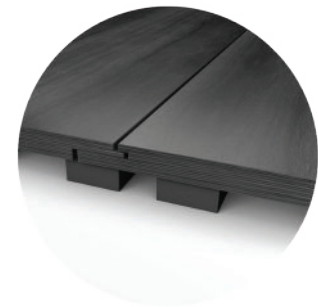
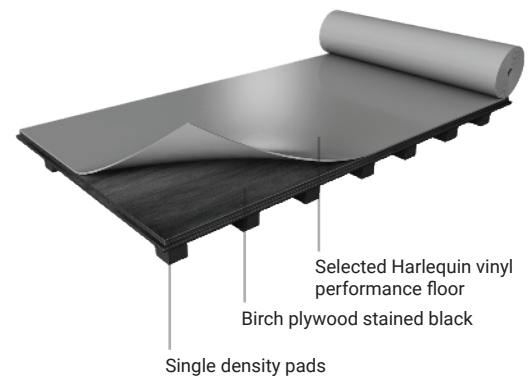
Installation: Harlequin Flexity is designed for permanent or semi-permanent installation. The panels join using a tongue and groove system and can be glued together for permanent installation or fixed using wood screws for a semi-permanent solution. The Harlequin Flexity panels are laid in such a way that cross joints do not coincide. This provides consistent shock dampening across the floor and offers the same feel and energy return to one or several dancers.

Specification Guide

Permanent or Portable	Permanent or Semi-Permanent
Panel Size	1.125m x 2.250m
Dance Surface Area	1.089m x 2.214m
Minimum Floor Thickness (before inclusion of chosen surface)	37mm
Weight	11.85kg/m ² (Without surface)
Testing Standard	BS EN 14904:2006
Shock Absorption	67%
Vertical Deformation	3.9mm
Area Deflection	12.8%
Rolling Load	>1500 N
Testing Standard	BS EN 1991-1-1:2002
Point Load	>3.60kN
Uniform Distributed Load	>10.00kN
Fire Rating	Bfl-s1 to EN 13501
Impact Generated Sound Level within room (Lw)	104.20 dB
Thermal Resistance - R Value	1.52 m ² K/W
Thermal Insulation - U Value	0.658 W/m ² K
Category of Use	A4
VOC Emissions	<0.10 mg/m ³
Warranty	10 years, 5 years if not installed by Harlequin
Installation	Installed by Harlequin or for self-installation
Underfloor Heating	Suitable for use with underfloor heating



Not to scale



If you would like further information or advice please contact us on +352 46 44 22 or info@harlequinfloors.com

Made in the EU. The Company reserves the right to make any variation in design or construction of the material described. Harlequin® is a registered trademark of Harlequin Europe SA. © Harlequin Floors 07/2023



HARLEQUIN
www.harlequinfloors.com

LONDON ♦ LUXEMBOURG ♦ BERLIN ♦ FORT WORTH ♦ MADRID ♦ PARIS ♦ PHILADELPHIA ♦ SYDNEY ♦ HONG KONG ♦ TOKYO ♦ LOS ANGELES