

Harlequin Duo™

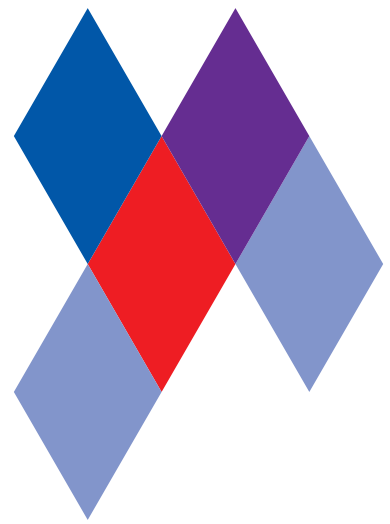
Harlequin Duo is the original double-sided vinyl performance floor. It is a versatile, lightweight and durable calendared vinyl with a slip-resistant performance surface on both sides.

Installation: Harlequin Duo is specified for temporary 'loose-lay' installation and can be rolled out on any flat, smooth surface. The joins are taped to form a continuous performance surface that rolls out quickly, lays flat and stays flat making it ideal for touring.

Usage: Harlequin Duo is suitable for use in theatres, concerts, display, exhibitions, television, aerobics and for many genres of dance including ballet, contemporary, percussive dance (flamenco, Irish and tap) hip-hop, jazz, street and Zumba.

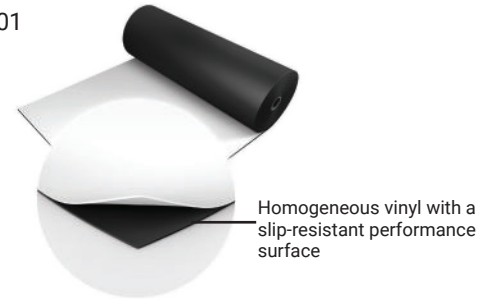
Specification Guide

Material	Homogeneous vinyl
Permanent or Portable	Portable
Roll Lengths	10m, 15m, 18m*, 20m, 25m, 30m
Roll Width	2m*/ 1,5m (black/grey // black/white)
Thickness	1.30mm
Weight	1.60kg/m ²
Finish	Smooth
Fire Rating	Bfl-s1 (EN 13501-1)
Warranty	10 years if installed by Harlequin 5 years if installed by the customer
Impact Sound Reduction	2dB
Fixing Type	Tape
Seams	Taped
Health and Safety	REACH Compliant
Light Reflectance	001 - 2/83, 003 - 20/43, 004 - 2/34, 310 - 10/29, 890 - 20/38, 005 - 2/65, 302 - 2/31, 119 - 4/4
Gloss Level	Nominal 4
Lightfastness	≥6
Recycled Content	23-30%
VOC Emissions	≤0.5mg/m ³
Recyclability	100%
Underfloor Heating	Not suitable for underfloor heating
Third Party Certification	Environmental Product Declaration A+ LEED, BREEAM, REACH Compliant

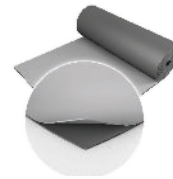


Available Colours:

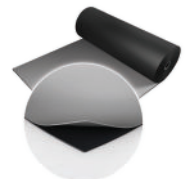
Black/White - 001



Dark Grey/Light Grey - 003



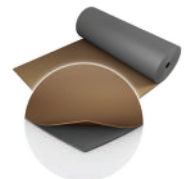
Black/Grey - 004



Hazelnut/Beige - 310



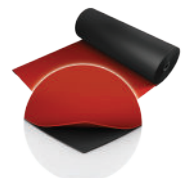
Fog/Tan - 890



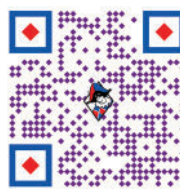
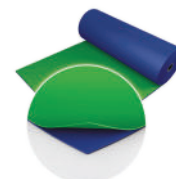
Black/Projection Grey - 005



Red/Black - 302



Chroma key Green/Blue - 119



If you would like further information or advice please contact us on +352 46 44 22 or info@harlequinfloors.com

Made in the EU. The Company reserves the right to make any variation in design or construction of the material described. Harlequin® is a registered trademark of Harlequin Europe SA. © Harlequin Floors 09/2023

LONDON ♦ LUXEMBOURG ♦ BERLIN ♦ MADRID ♦ PARIS ♦ LIEGE ♦ PHILADELPHIA ♦ LOS ANGELES ♦ FORT WORTH ♦ SYDNEY ♦ HONG KONG ♦ TOKYO



HARLEQUIN
www.harlequinfloors.com