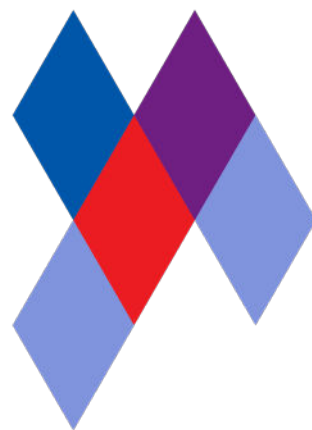


# Harlequin Studio



**Harlequin Studio** is a hardwearing, slip-resistant, vinyl performance floor that features a lightweight closed-cell foam backing to provide protection against hard sub-floors, it is ideal as a multi-purpose dance or stage floor.

**Installation:** Harlequin Studio is specified for permanent or temporary installation, the joints are welded to form a continuous performance surface and is recommended for use in conjunction with a suitable Harlequin sprung floor.

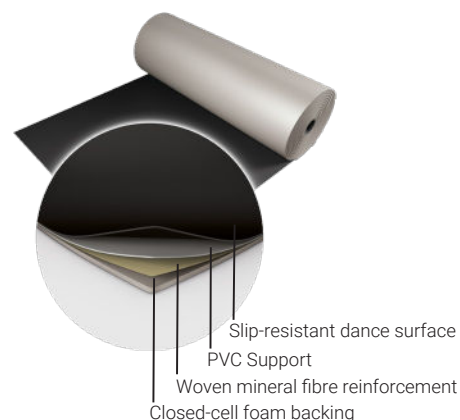
**Usage:** Harlequin Studio is suitable for ballet, contemporary and modern dance. It is also used for aerobics, hip-hop, jazz and street dance.

## Specification Guide

Material	Heterogeneous vinyl
Permanent or Portable	Both
Roll Lengths	10m, 15m, 18m, 20m, 25m, 30m
Roll Width	1.5m
Thickness	3mm
Weight	2.3kg/m <sup>2</sup>
Finish	Smooth
Fire Rating	Bfl-s1 (EN 13501-1)
Warranty	10 years if installed by Harlequin 5 years if installed by the customer
Impact Sound Reduction	6dB, with Harlequin Activity sprung floor 22dB
Fixing Type	Adhesive or Tape
Seams	Welded or Taped
Light Reflectance	180-2, 880-41, 890-20, 100-87
Gloss Level	Nominal 6
Lightfastness	>6
Recycled Content	23-30%
VOC Emissions	≤0.5mg/m <sup>3</sup>
Recyclability	100%
Underfloor Heating	Suitable for use with underfloor heating
Third Party Certification	Environmental Product Declaration A+ LEED, BREEAM, REACH Compliant

## Available Colours:

Black - 180



White - 100



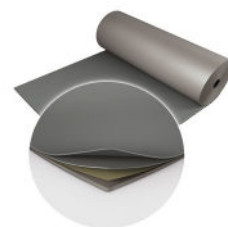
Light Grey - 156



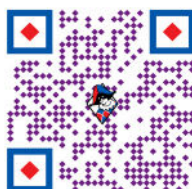
Grey - 880



Dark Grey - 890



**BREEAM® vinyl** plus  
COMMITTED TO SUSTAINABLE DEVELOPMENT



If you would like further information or advice please contact us on  
**+352 46 44 22 or [info@harlequinfloors.com](mailto:info@harlequinfloors.com)**

Made in the EU. The Company reserves the right to make any variation in design or construction of the material described. Harlequin® is a registered trademark of Harlequin Europe SA. © Harlequin Floors 01/2024



**HARLEQUIN**  
[www.harlequinfloors.com](http://www.harlequinfloors.com)

LONDON ♦ LUXEMBOURG ♦ BERLIN ♦ MADRID ♦ PARIS ♦ LIEGE ♦ PHILADELPHIA ♦ LOS ANGELES ♦ FORT WORTH ♦ SYDNEY ♦ HONG KONG ♦ TOKYO